

Monocyte populations in acute ischemic stroke

AIMS: To We assess whether the different monocytes subsets and its cytokines can predict the clinical course and outcome of patients who suffer an acute ischemic stroke

- Prospective multicentre case – control study
- Group of stroke patients from stroke units and control group (matched by age).
- Blood and plasma samples are collected at baseline , during hospitalization and at 90 d.
- Flow cytometry study is performed at acute stage

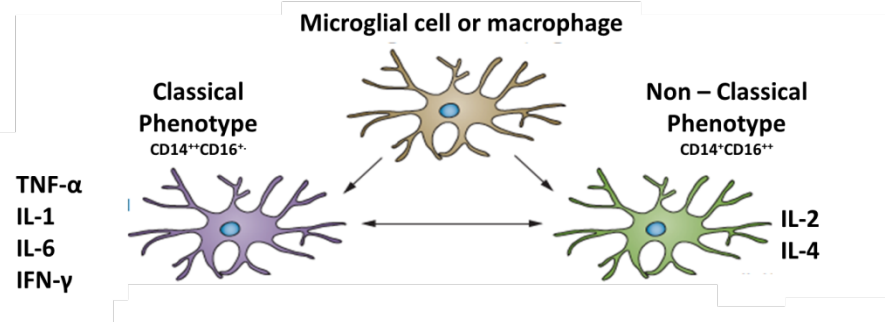
Inclusion Criteria

Age 18 – 100 years
Previously independent
< 24 hours symptoms
No rTPA

No Trombectomy

Exclusion Criteria

Active tumor/infection
Active inflammatory disease



PI: Marta Oses
Neurology Lab

Instituto de investigación Sanitaria
Fundación Jiménez Díaz

marta.oses@fjd.es